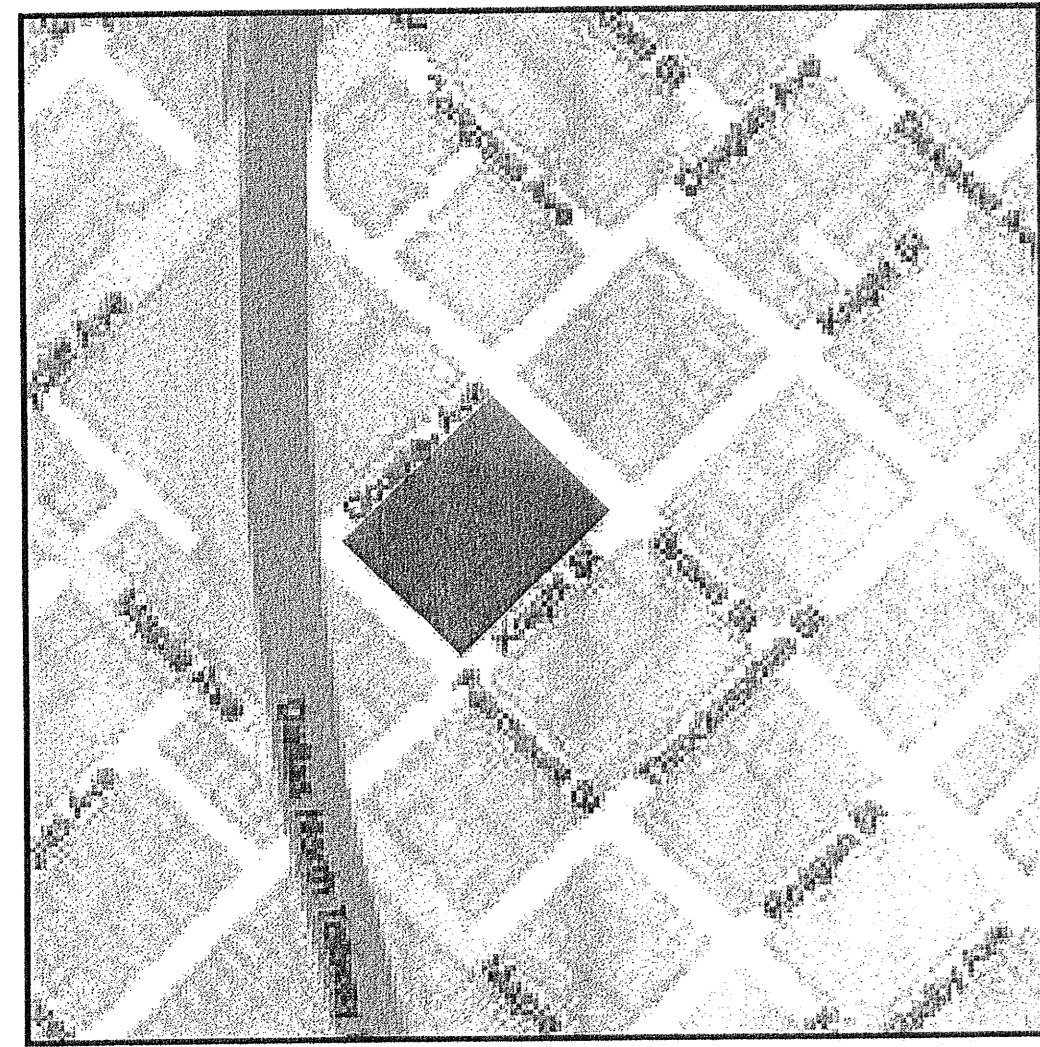
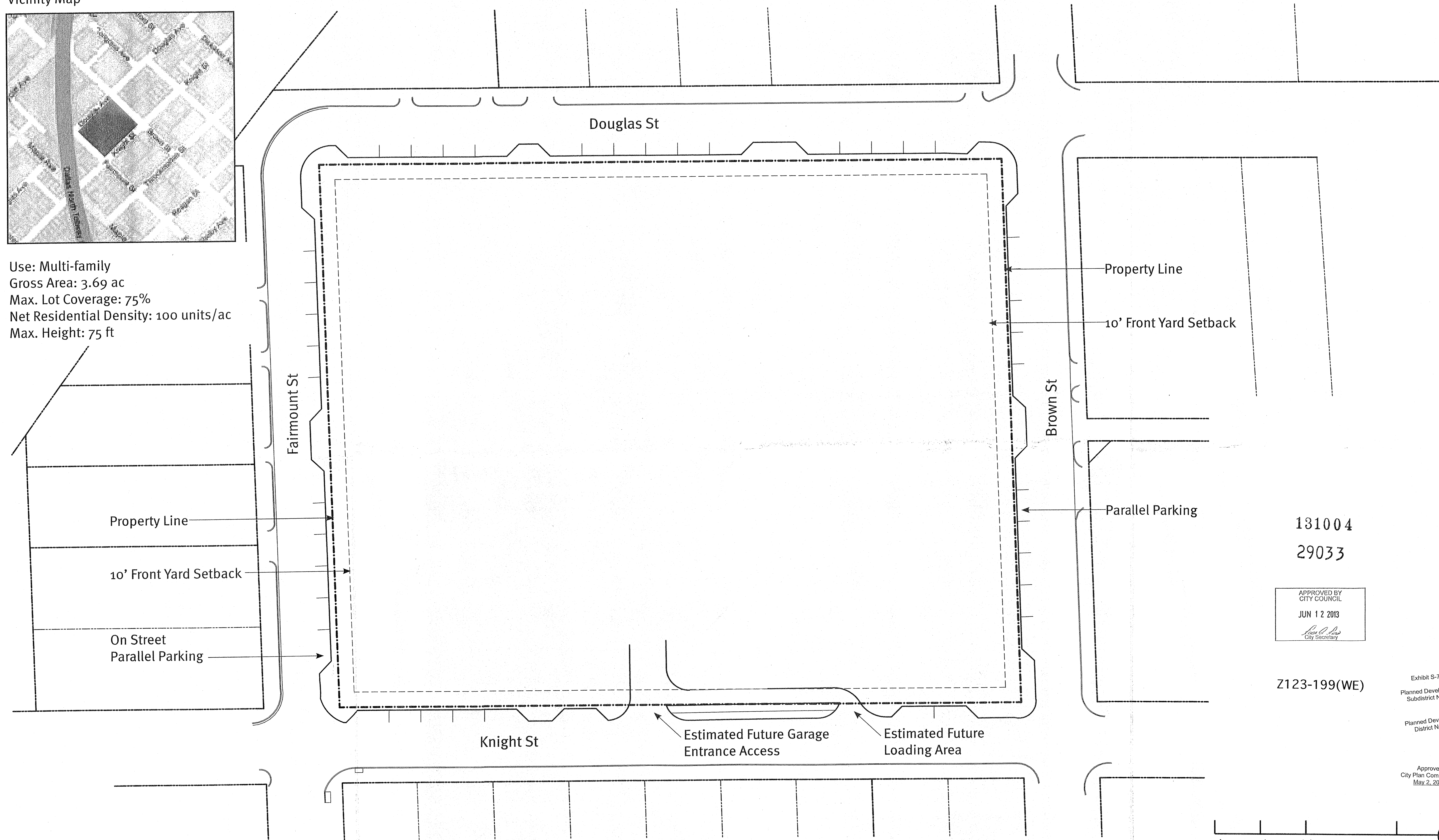


Vicinity Map



Use: Multi-family
 Gross Area: 3.69 ac
 Max. Lot Coverage: 75%
 Net Residential Density: 100 units/ac
 Max. Height: 75 ft



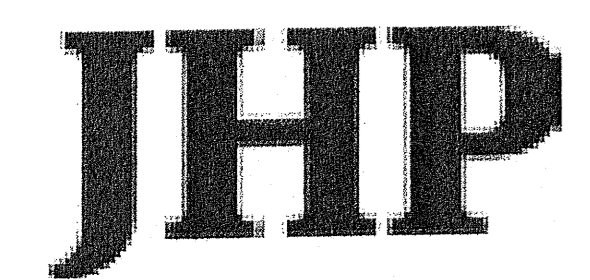
131004
 29033

APPROVED BY
 CITY COUNCIL
 JUN 12 2013
Scott A. Davis
 City Secretary

Z123-199(WE)

Exhibit S-78B
 Planned Development
 Subdistrict No. 78
 Planned Development
 District No. 193

Approved
 City Plan Commission
 May 2, 2013



Fairmount at Douglas
 Dallas, Texas

Trammell Crow Residential

Conceptual Plan
 Scale 1" = 60' - 0"

01.08.2013	2012085	jc
Copyright © JHP 2012 Not for Regulatory Approval, Permit or Construction: Mike Arbour Registered Architect of State of TX, Registration No. 11958		